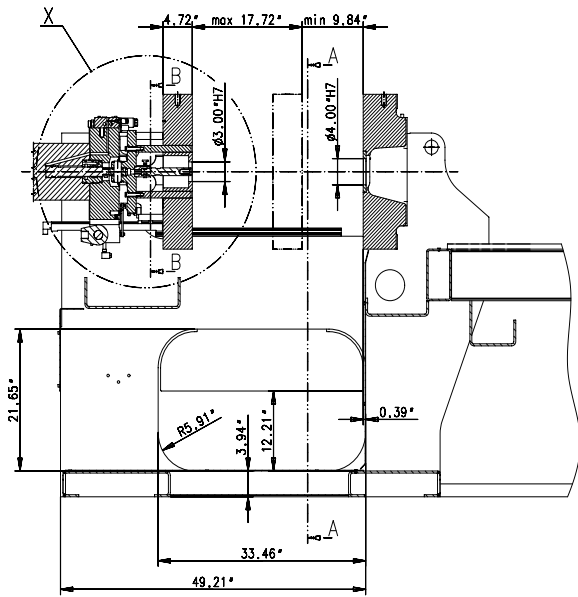
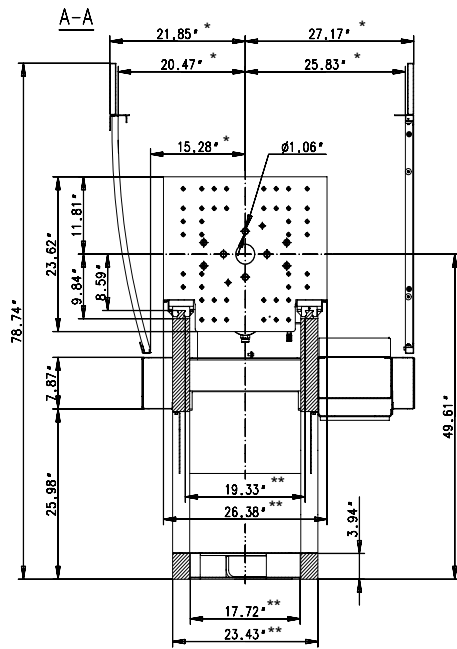




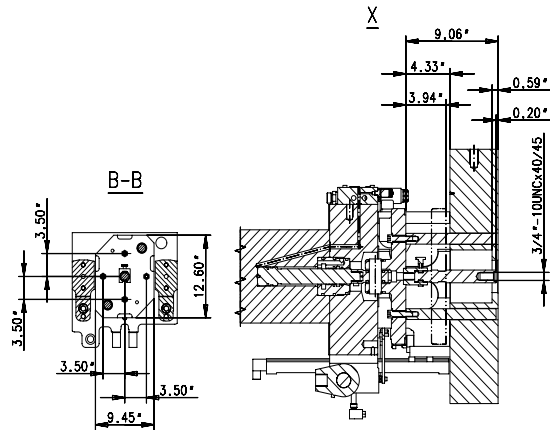
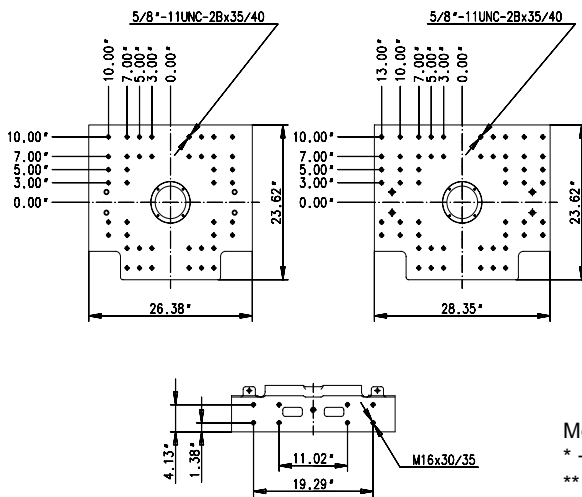
1004889_us

Machine designation	Dry operation / stroke (Euromap 6)			Weight		Length L		Height H	
	sec	mm	inches	to	US tons	mm	inches	mm	inches
VC 80 / 65, 75, 85 US	1.5	150	5.9	5.1	5.6	3910	153.94	2133	83.98
VC 200 / 65, 75, 85 US	1.5	150	5.9	5.2	5.7	3910	153.94	2133	83.98
VC 330 / 65, 75, 85 US	1.5	150	5.9	5.3	5.8	3910	153.94	2133	83.98



B platens (Standard)

C plates (Option)



Measures in case of frame widening:

* + 0.98"
** + 1.97"

1004922_SPI

Size designation

		VC.../65 US	VC.../75 US	VC.../85 US
Clamping force	US tons/kN	65 / 580	75 / 670	85 / 760
Opening force	US tons	3.15	3.15	3.15
Opening stroke	inches	17.72	17.72	17.72
Mold height min.	inches	9.84	9.84	9.84
Daylight max.	inches	27.56	27.56	27.56
Mould fixing platen size h x v	inches	26.38 x 23.62	26.38 x 23.62	26.38 x 23.62
Enlarged mould fixing platen h x v	inches	28.35 x 23.62	28.35 x 23.62	28.35 x 23.62
Delivery chute width	inches	17.72	17.72	17.72
Ejector stroke	inches	3.94	3.94	3.94
Ejector force forward / return	US tons	4.49 / 1.57	4.49 / 1.57	4.49 / 1.57
Mold weight max. moving platen/ Center of gravity	lbs / inches	992 / 6.50	992 / 6.50	992 / 6.50