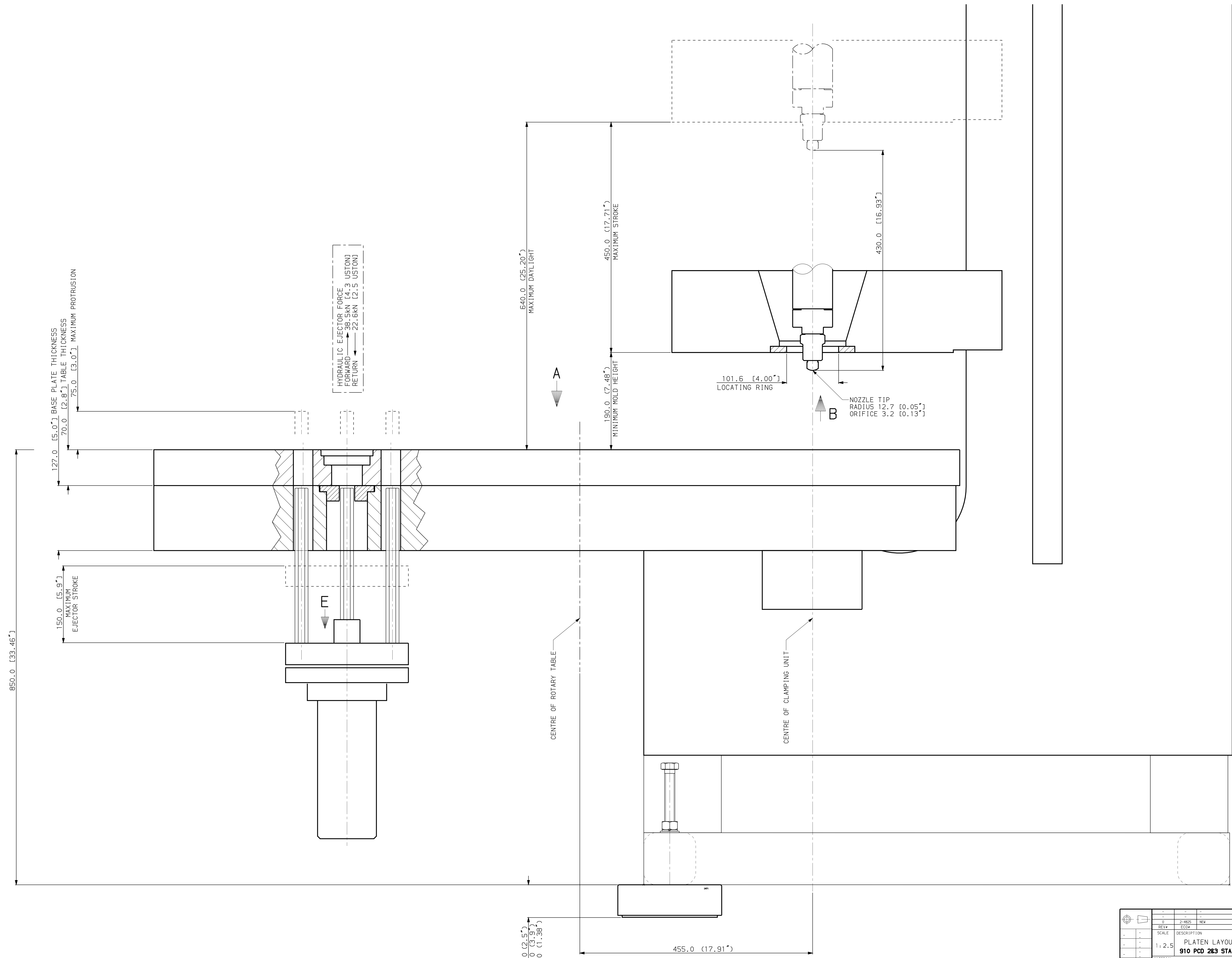


FRONT OF MACHINE



HYDRAULIC EJECTOR FORCE
 FORWARD 28.5KN [4.3 USTONS]
 RETURN 22.8KN [2.5 USTONS]

101.6 [4.00"]
 LOCATING RING

NOZZLE TIP
 RADIUS 12.7 [0.05"]
 ORIFICE 3.2 [0.13"]

MIN 64.0 (2.5")
 MAX 99.0 (3.9")
 ADJ 35.0 (1.38")

- NOTES:**
1. DIMENSIONS ARE IN MILLIMETER AND [INCH].
 2. TECHNICAL DATA SUBJECT TO CHANGE WITHOUT NOTICE.

RELEASED
 MICROFILM
 REV. # 0

PART WEIGHT IN Kg.		DRAWING NO.		SHEET	
-		9775.002.6026E		1 of 3	
-		REV. #		0	

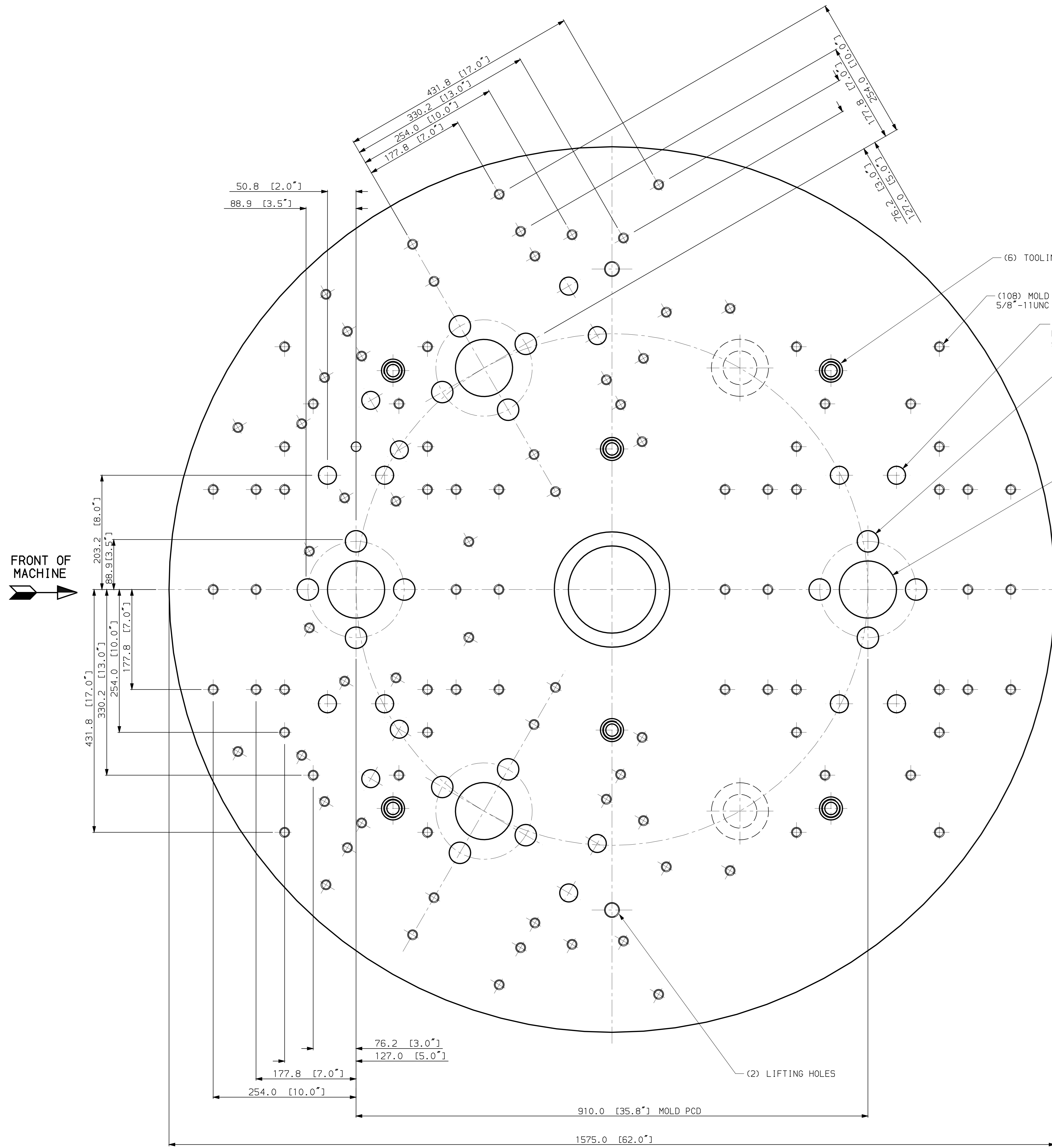
REV#	ECO#	REVISION	DATE	NAME
0	3-ABS	NEW	04-MAY-00	KWB

SCALE	DESCRIPTION	DR. NO.	DATE
1:2.5	PLATEN LAYOUT 150VVR0	KWB	04-MAY-00
	910 PCD 283 STATION 3301NJ.	KWB	22-MAY-00

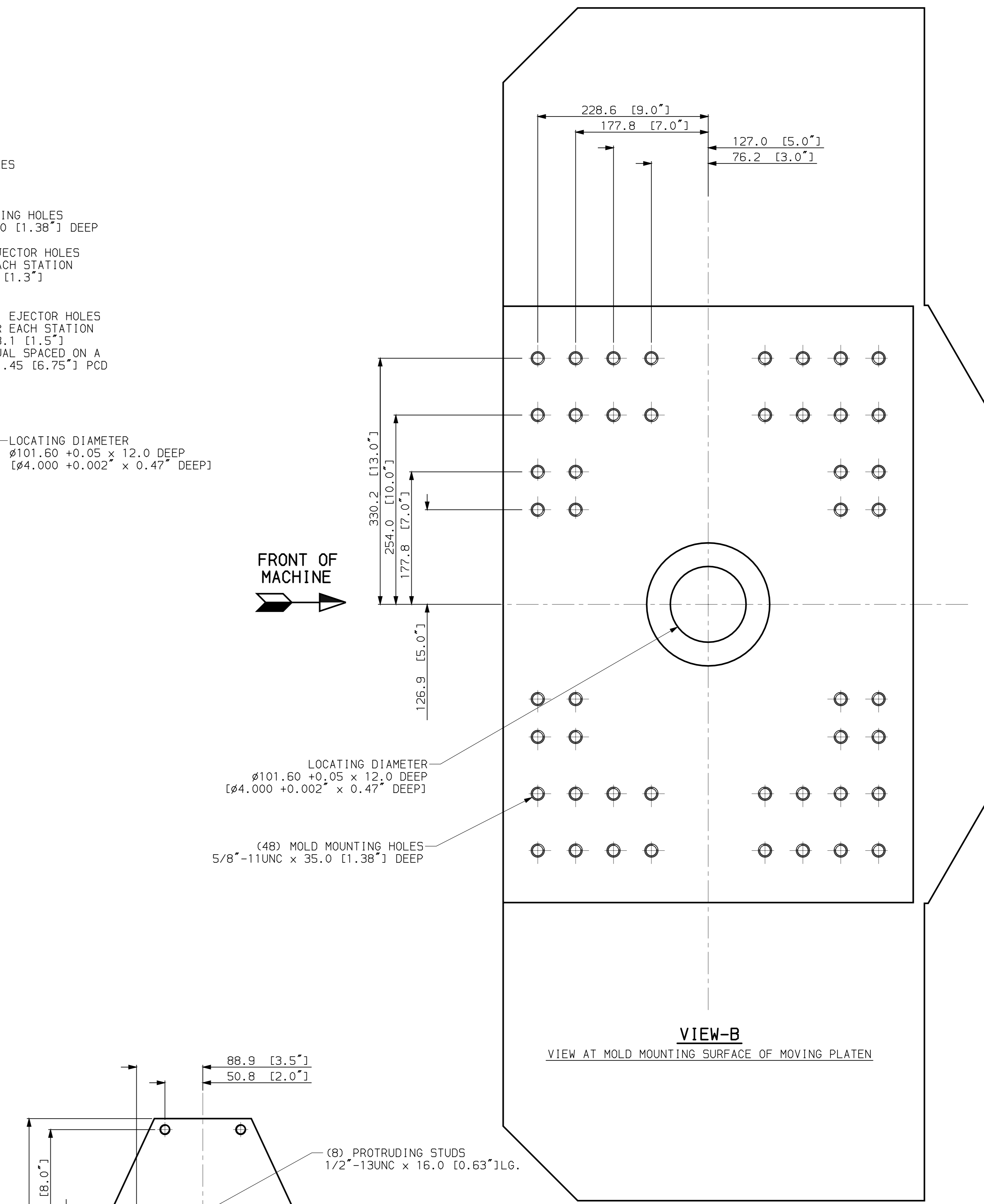
MATERIAL	NAME	DATE
STEEL	KWB	04-MAY-00

SIZE	FROM	TO	REPLACES
0.5	0.5	6	9557.002.8936E REV10
1	6	30	
2	30	120	
3	120	315	
4	315	1000	
5	1000	2000	
6	2000		

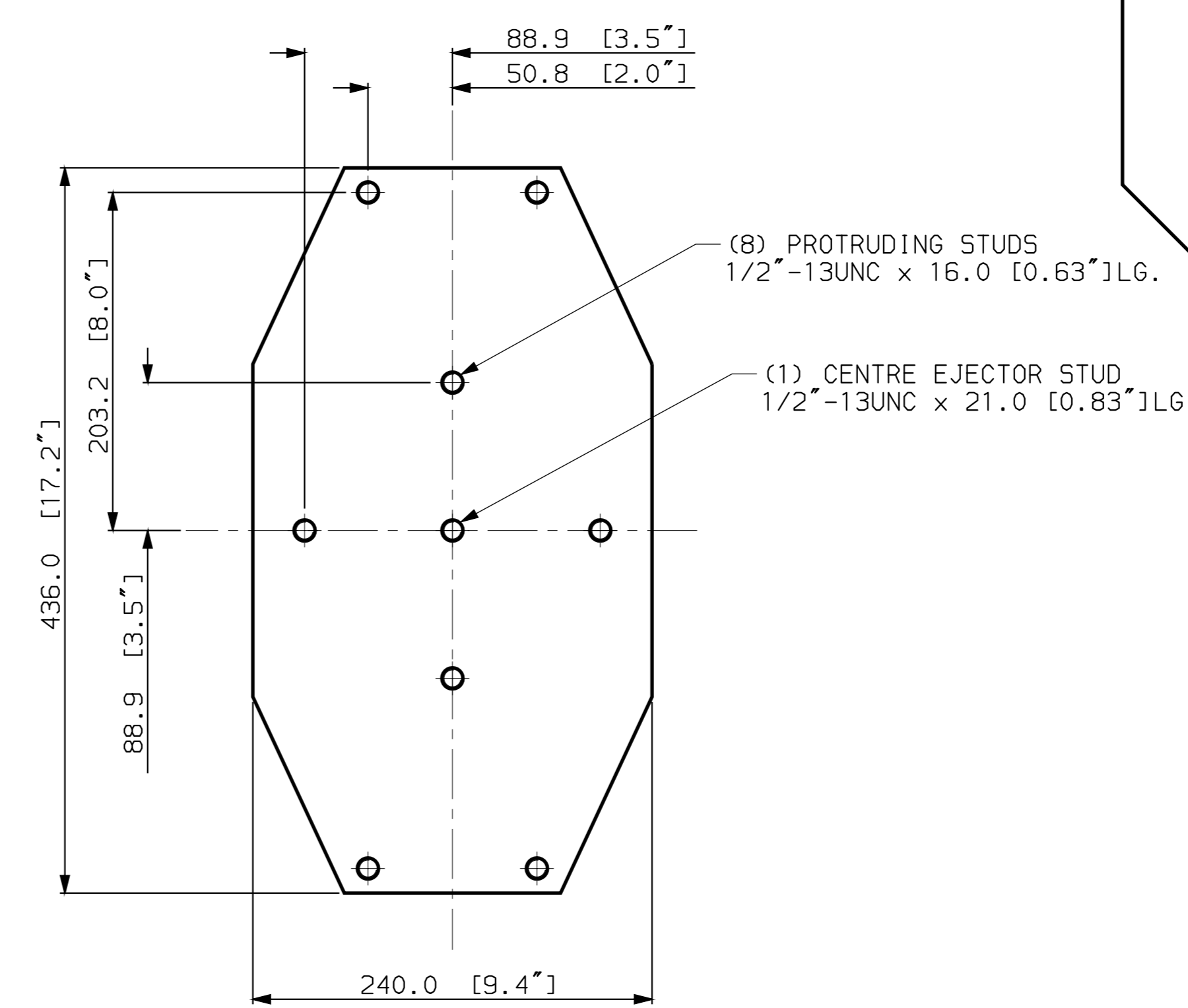
DIM.	TOL. IN MICR.	COARSE #	MEDIUM #	FINE #	DRYING NO.
METERS		0.2	0.5	0.8	1.2
		2.0	3.0	4.0	



VIEW-A
VIEW AT TOP OF TWO & THREE STATION TURNABLE



VIEW-B
VIEW AT MOLD MOUNTING SURFACE OF MOVING PLATEN



VIEW-E
VIEW AT EJECTOR PLATE

RELEASED
MICROFILM
REV. # 0

REV	DATE	DESCRIPTION	BY	CHKD
0	04-MAY-00	NEW	EJG	KWB
1	24-MAY-00	REVISION	EJG	KWB

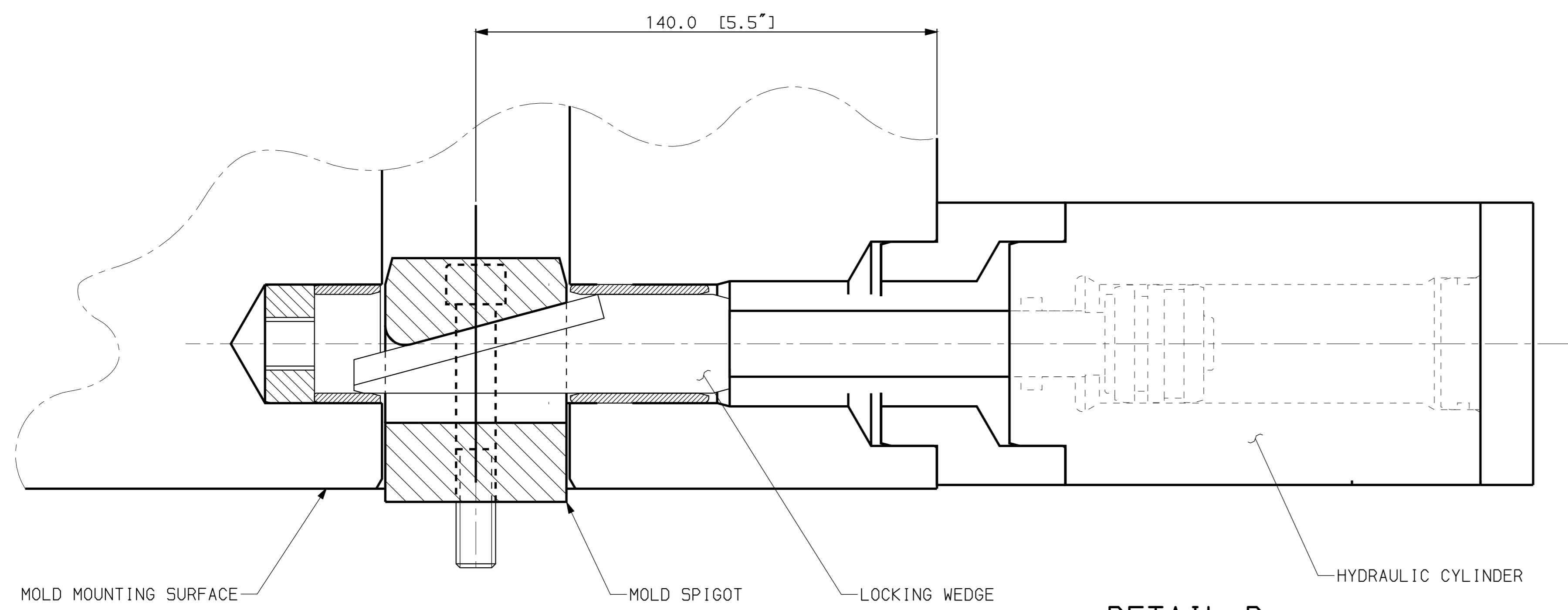
SCALE	DESCRIPTION	NAME	DATE
1:3	PLATEN LAYOUT 150VVR0	EJG	04-MAY-00
	910 PCD 2 & 3 STATION 330INJ	EJG	24-MAY-00

DIM.	TOL. IN MICRONS	COARSE #	MEDIUM #	FINE #	DRYING NO.
0.1	0.2	0.3	0.5	0.8	1.2
0.2	0.5	0.8	1.2	2.0	3.0
0.5	1.2	2.0	3.0	4.0	6.0

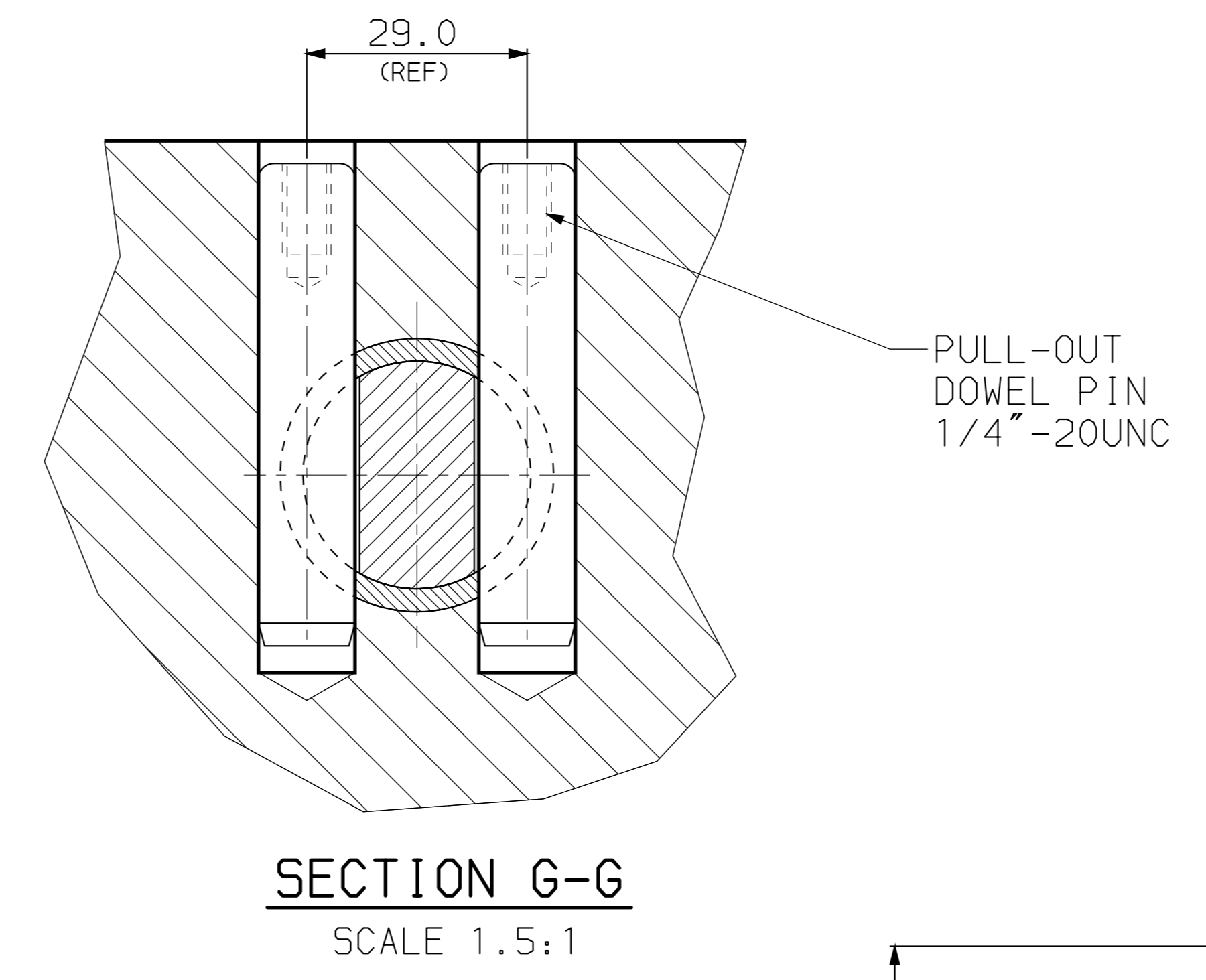
PART WEIGHT IN Kg.	SHEET	OF	REV.
-	2	3	0

ENGEL
GUELPH - CANADA

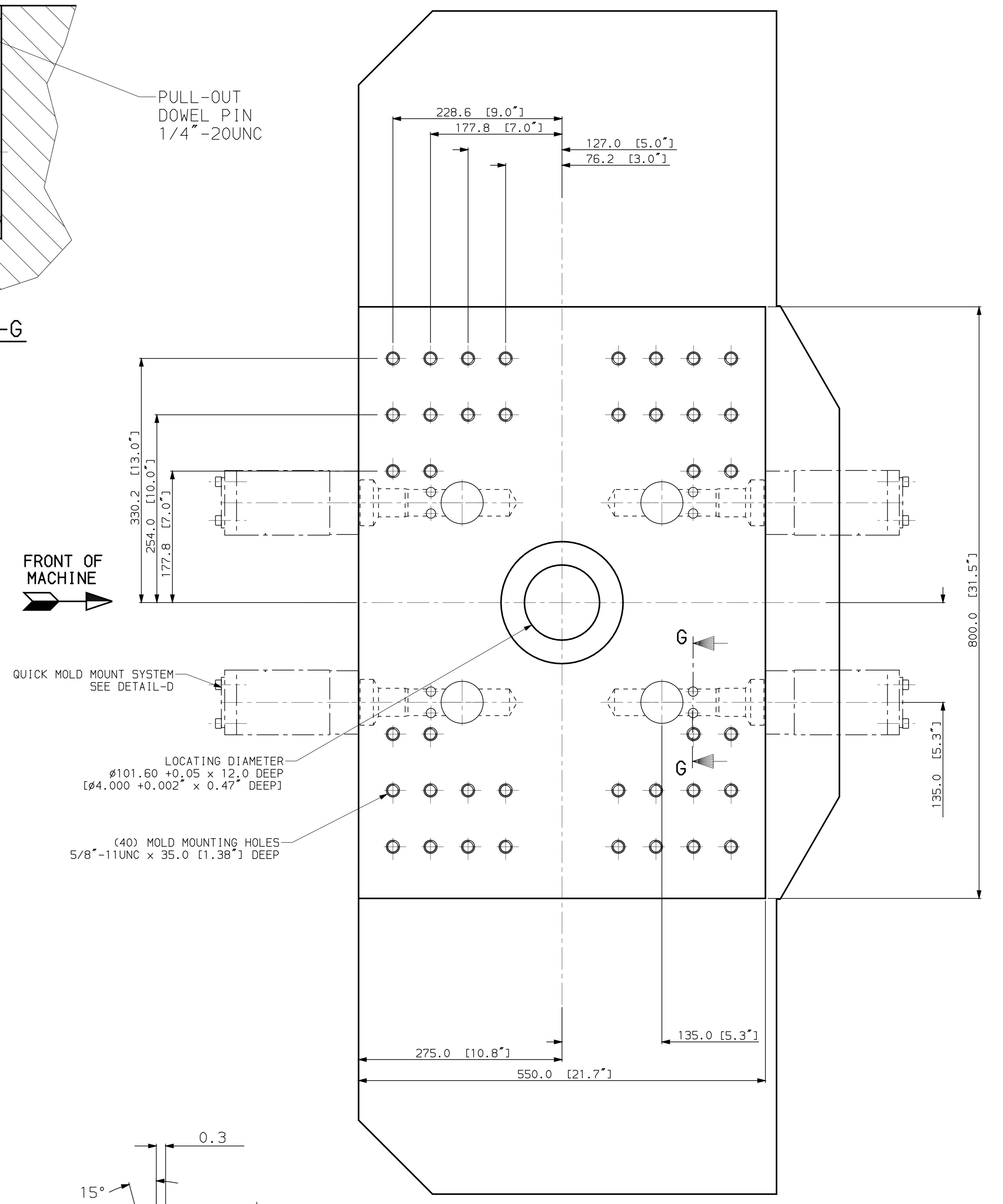
9775.002.6026E



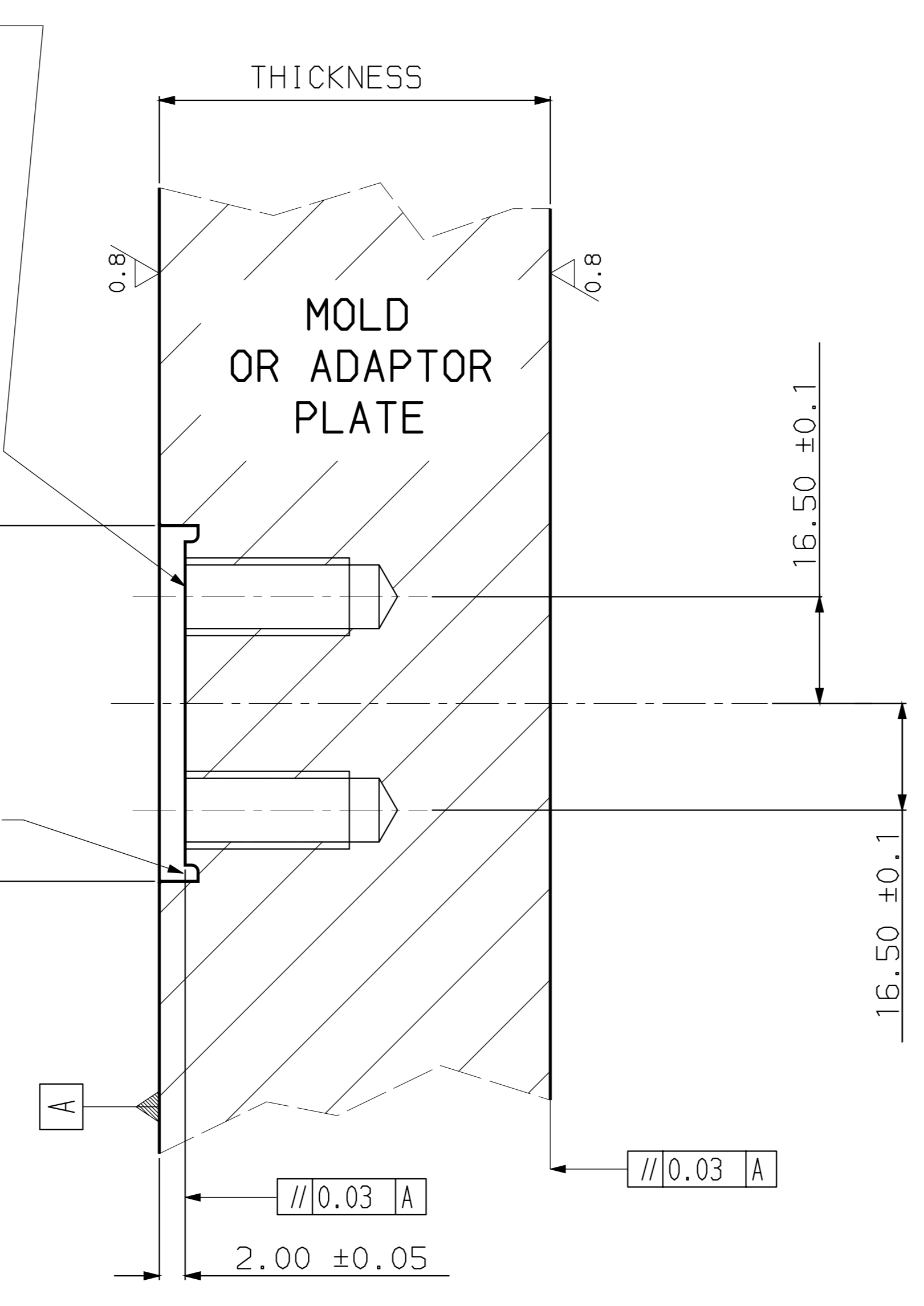
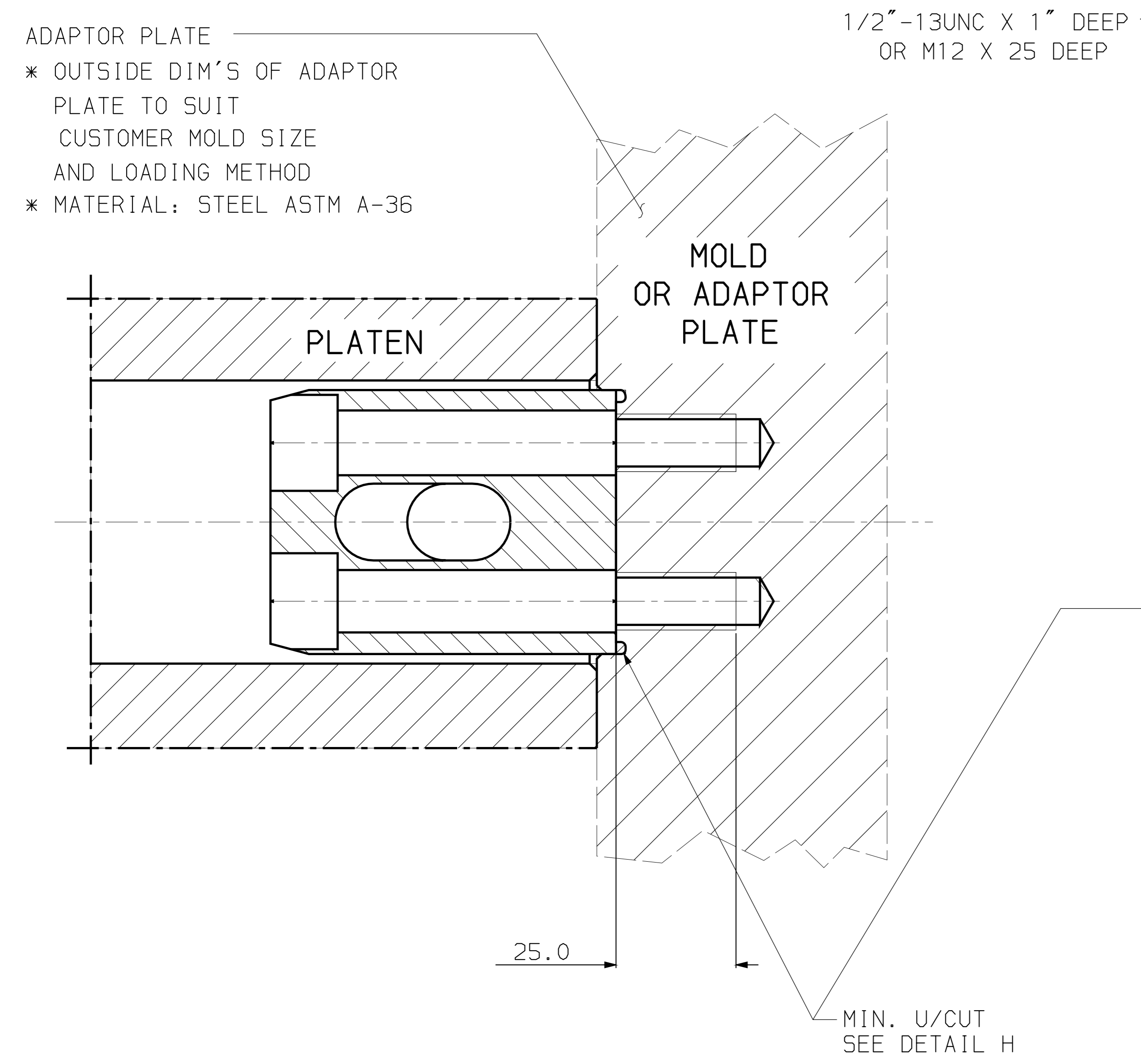
DETAIL-D
 QUICK MOLD MOUNT SYSTEM
 (OPTIONAL)



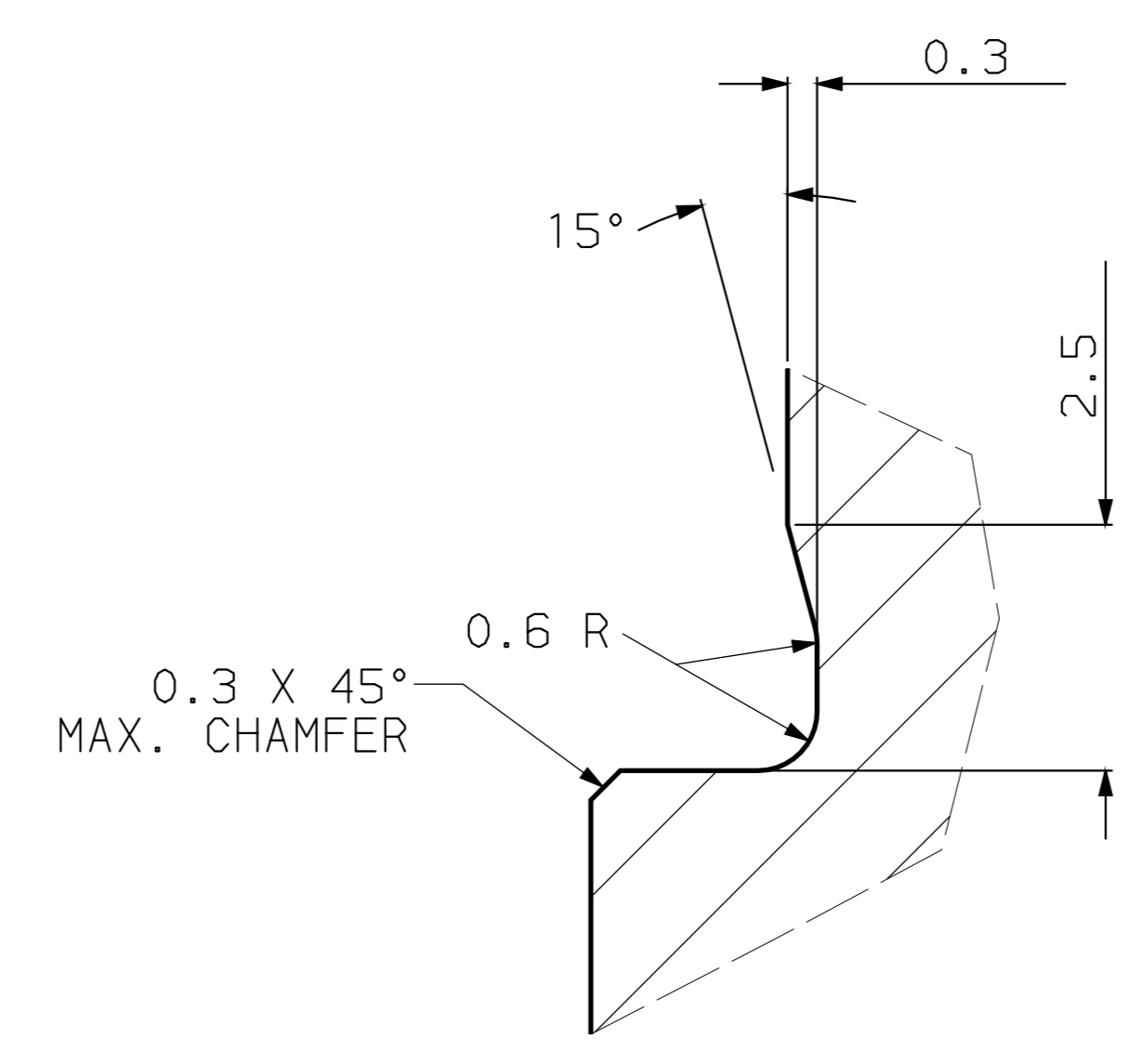
SECTION G-G
 SCALE 1.5:1



VIEW-B
 VIEW AT MOLD MOUNTING SURFACE OF MOVING PLATEN
 (WITH QUICK MOUNT CYLINDERS)
 (OPTIONAL)



MOLD OR ADAPTOR PLATE
 SHOWN WITHOUT SPIGOTS
 MACHINING DIMENSIONS
 SCALE 1.5:1



DETAIL H
 UNDERCUT
 DIN 509-E0, 6x0, 3
 N. T. S.

RELEASED
 MICROFILM
 REV. # 0

REV	DATE	DESCRIPTION	NAME	DATE
0	04-MAY-80	NEW	KWB	
1	04-MAY-80	REVISION		
2	24-MAY-80	REVISION		

SCALE	DESCRIPTION	NAME	DATE
1:3	PLATEN LAYOUT 150VVR0		
	910 PCD 2 & 3 STATION 330INJ		

MATERIAL	NAME	DATE
STEEL ASTM A-36		

FROM	TO	REPLACES
0.5	6	1000
1.0	30	1000
2.0	315	1000
3.0	1000	2000
4.0	2000	2000

DIM	TOL.	MICRO	METERS	COARSE	DRYING	NO.
	0.1	0.2	0.3	0.5	0.8	1.2
	0.2	0.5	0.8	1.2	2.0	3.0
	0.5	0.8	1.2	2.0	3.0	4.0

PART WEIGHT IN Kg.	9775.002.6026E	SHEET	3	OF	3	REV.	0
--------------------	----------------	-------	---	----	---	------	---