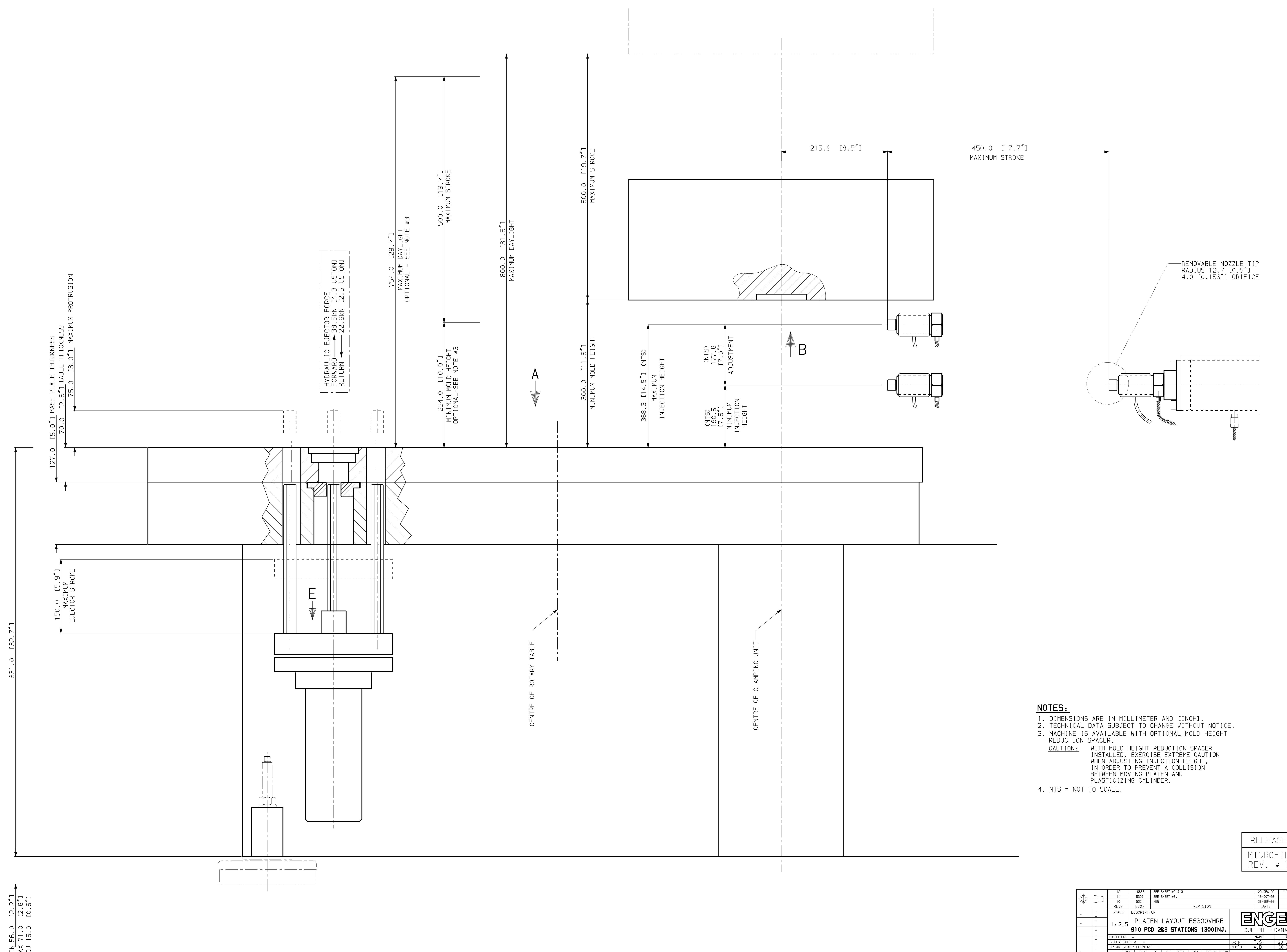


FRONT OF MACHINE



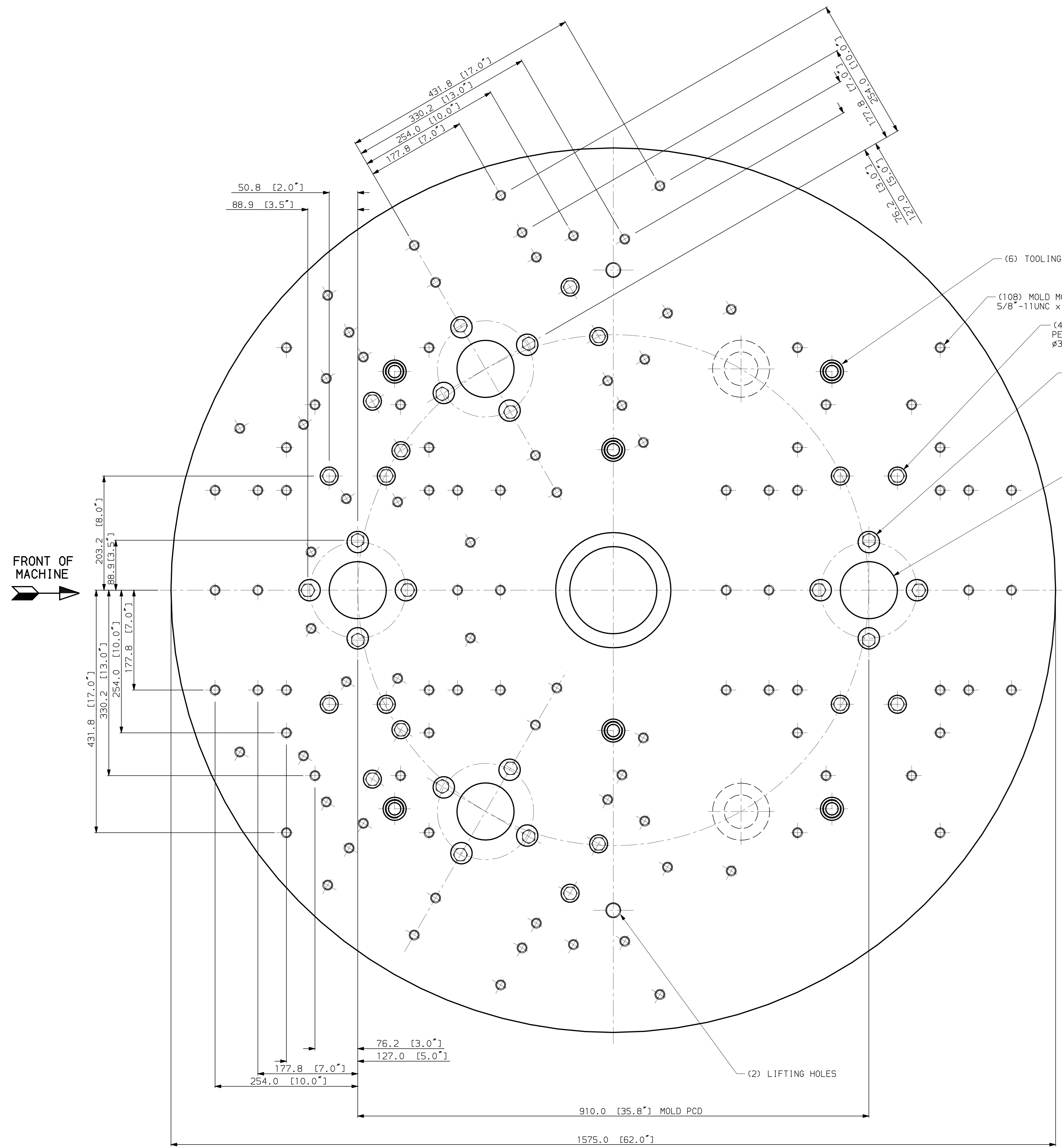
- NOTES:**
1. DIMENSIONS ARE IN MILLIMETER AND [INCH].
 2. TECHNICAL DATA SUBJECT TO CHANGE WITHOUT NOTICE.
 3. MACHINE IS AVAILABLE WITH OPTIONAL MOLD HEIGHT REDUCTION SPACER.
CAUTION: WITH MOLD HEIGHT REDUCTION SPACER INSTALLED, EXERCISE EXTREME CAUTION WHEN ADJUSTING INJECTION HEIGHT, IN ORDER TO PREVENT A COLLISION BETWEEN MOVING PLATEN AND PLASTICIZING CYLINDER.
 4. NTS = NOT TO SCALE.

RELEASED
MICROFILM
REV. # 12

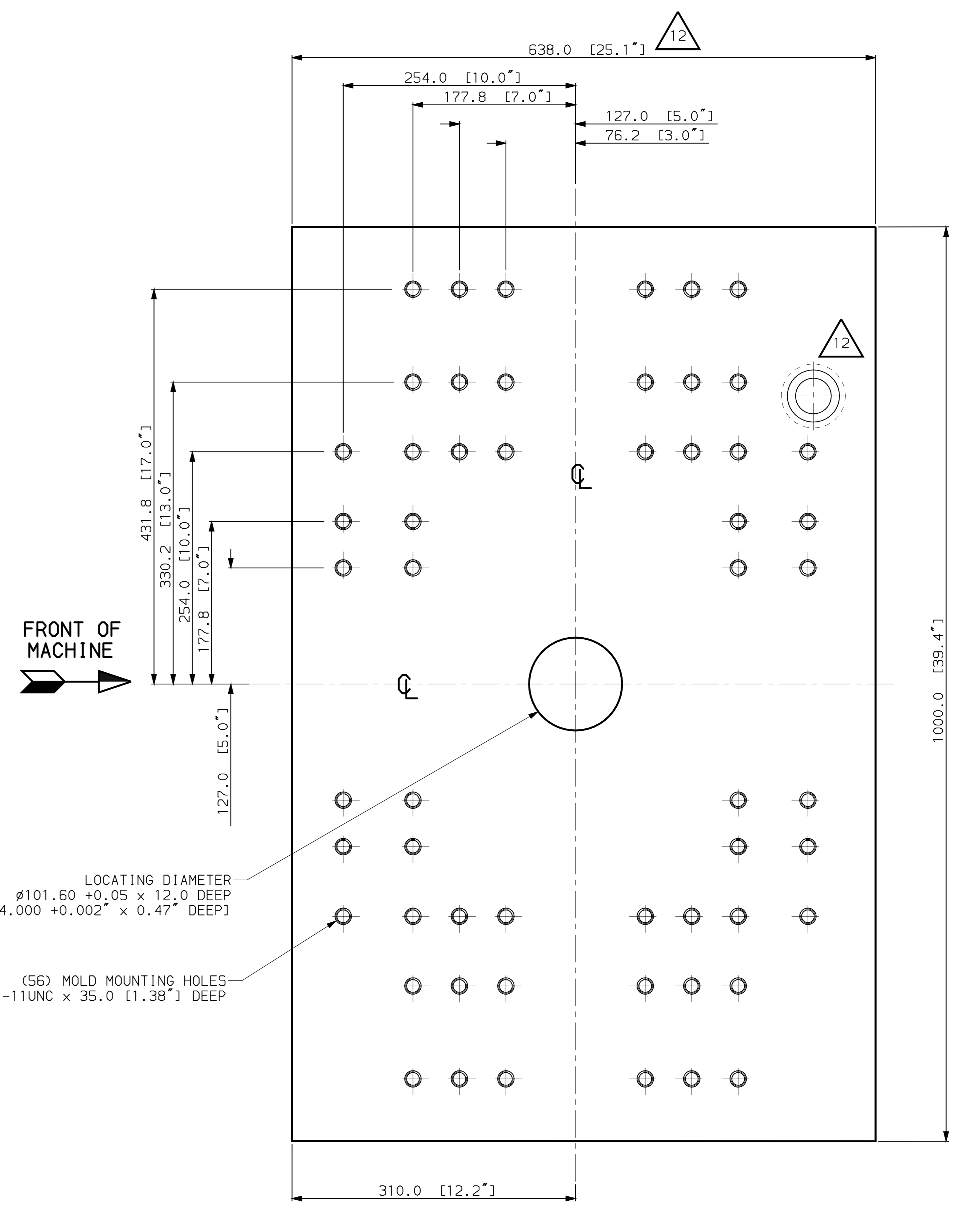
MIN 56.0 [2.2"]
MAX 71.0 [2.8"]
ADJ 15.0 [0.6"]

PART WEIGHT IN Kg.		5630.002.0176E	
-		1 of 3	

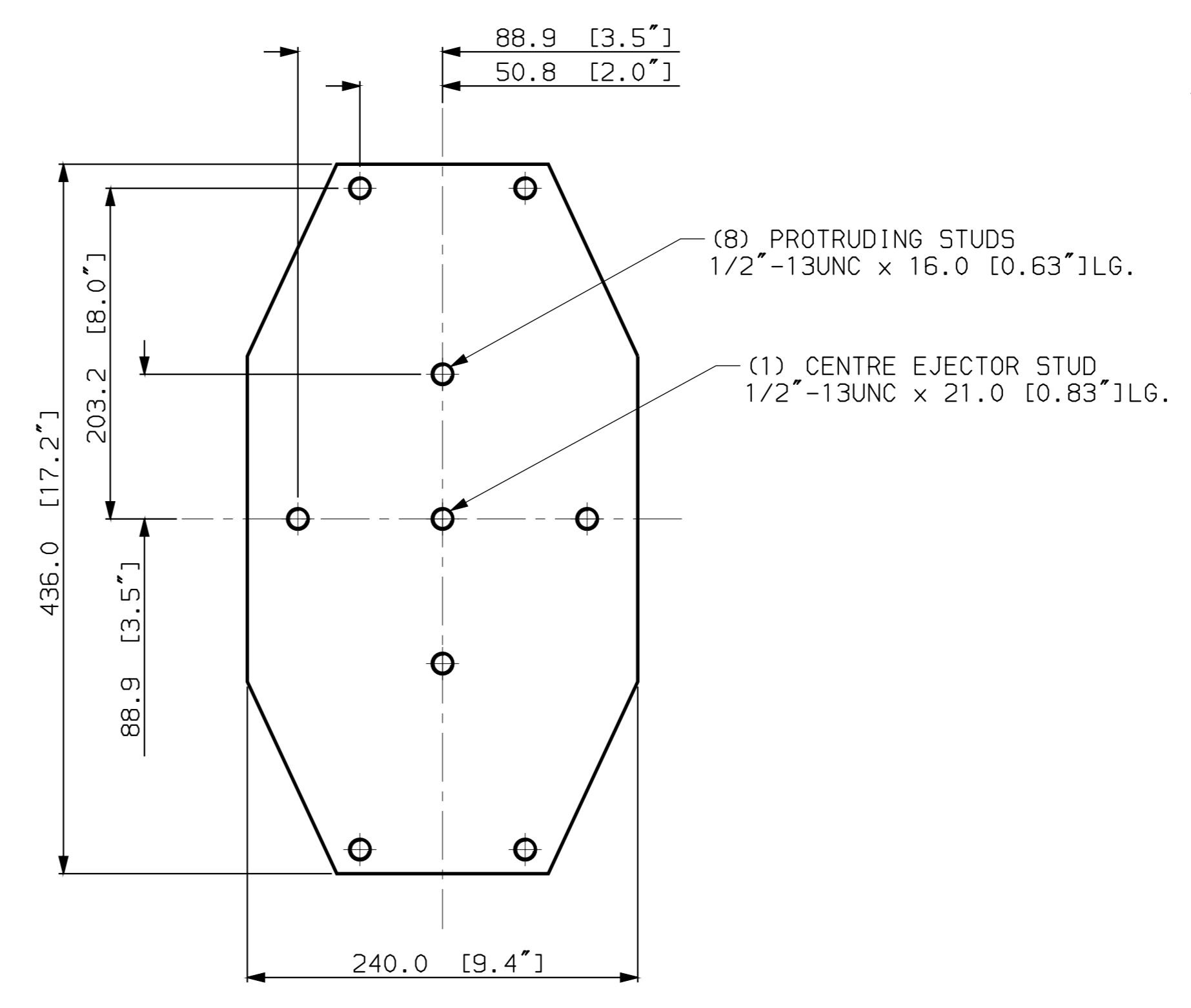
12	1686	SEE SHEET #2 & 3	09-DEC-99	LIVIS P.
11	5327	SEE SHEET #3.	13-OCT-98	T.S.
10	5204	NEW	28-SEP-98	T.S.
REV#	ECOM	REVISION	DATE	NAME
SCALE	DESCRIPTION	ENGEL		
1:2.5	PLATEN LAYOUT ES300VHRB	GUELPH - CANADA		
MATERIAL	910 PCD 283 STATIONS 1300INJ.	NAME	DATE	
DRAWING CODE		DR. NO.	I.S.	
BREAK SHARP CORNERS		CHK'D	28-SEP-98	
FROM	0.5 6 30 120 315 1000 2000	REPLACES	-	
TO	4.0 30 120 315 1000 2000	COPY FROM	-	
FINE #	0.05 0.1 0.15 0.2 0.3 0.5 0.8	DR. NO.	-	
MEDIUM #	0.1 0.2 0.3 0.5 0.8 1.2 2.0	DR. NO.	-	
COARSE #	0.2 0.5 0.8 1.2 2.0 3.0 4.0	DR. NO.	-	
DIM. MICR		5630.002.0176E		
DIM. METERS		1 of 3		
THIS DRAWING AND THE INFORMATION HEREIN IS CONFIDENTIAL AND MUST NOT BE REPRODUCED OR USED IN ANY WAY WITHOUT WRITTEN PERMISSION OF ENGEL CANADA INC.		SHEET 1 of 3 REV. # 12		



VIEW-A
VIEW AT TOP OF TWO & THREE STATION TURNTABLE



VIEW-B
VIEW AT MOLD MOUNTING SURFACE OF MOVING PLATEN



VIEW-E
VIEW AT EJECTOR PLATE

- (6) TOOLING HOLES
- (108) MOLD MOUNTING HOLES
5/8"-11UNC x 35.0 [1.38"] DEEP
- (4) EJECTOR HOLES PER EACH STATION
ø32.0 [1.3"]
- (4) EJECTOR HOLES PER EACH STATION
ø38.1 [1.5"]
EQUAL SPACED ON A
171.45 [6.75"] PCD
- LOCATING DIAMETER
ø101.60 +0.05 x 12.0 DEEP
[ø4.000 +0.002" x 0.47" DEEP]

- LOCATING DIAMETER
ø101.60 +0.05 x 12.0 DEEP
[ø4.000 +0.002" x 0.47" DEEP]
- (56) MOLD MOUNTING HOLES
5/8"-11UNC x 35.0 [1.38"] DEEP

- (8) PROTRUDING STUDS
1/2"-13UNC x 16.0 [0.63"] L6.
- (1) CENTRE EJECTOR STUD
1/2"-13UNC x 21.0 [0.83"] L6.

RELEASED
MICROFILM
REV. # 12

12	1686	ADDED 4TH HOLE, DIM WAS 620.0124, 4"5	09-DEC-99	LEVIS P.
11	5327	SEE SHEET#3	13-OCT-98	T.S.
10	5204	NEW	26-SEP-98	T.S.
REV#	ECOM	REVISION	DATE	NAME
SCALE	DESCRIPTION			
1:3	PLATEN LAYOUT ES300VHRB			
	910 PCD 283 STATIONS 1300INJ.			
MATERIAL	NAME	DATE		
DIM. CODE	DRW. NO.	DATE		
BREAK SHARP CORNERS	CMC. D.	DATE		
FROM	0.5	6	30	120
TO	8.0	30	315	1000
SIZE	10	4.0	120	315
FINE #	0.05	0.1	0.15	0.2
MEDIUM #	0.1	0.2	0.3	0.5
COARSE #	0.2	0.5	0.8	1.2
DIM. METERS	0.2	0.5	0.8	1.2
	2.0	3.0	4.0	
PART WEIGHT IN Kg.				
THIS DRAWING AND THE INFORMATION HEREIN IS CONFIDENTIAL AND MUST NOT BE REPRODUCED OR USED IN ANY WAY WITHOUT WRITTEN PERMISSION OF ENGEL CANADA INC.				
DRAWING NO.			REV. #	
5630.002.0176E			12	
SHEET			2 of 3	

